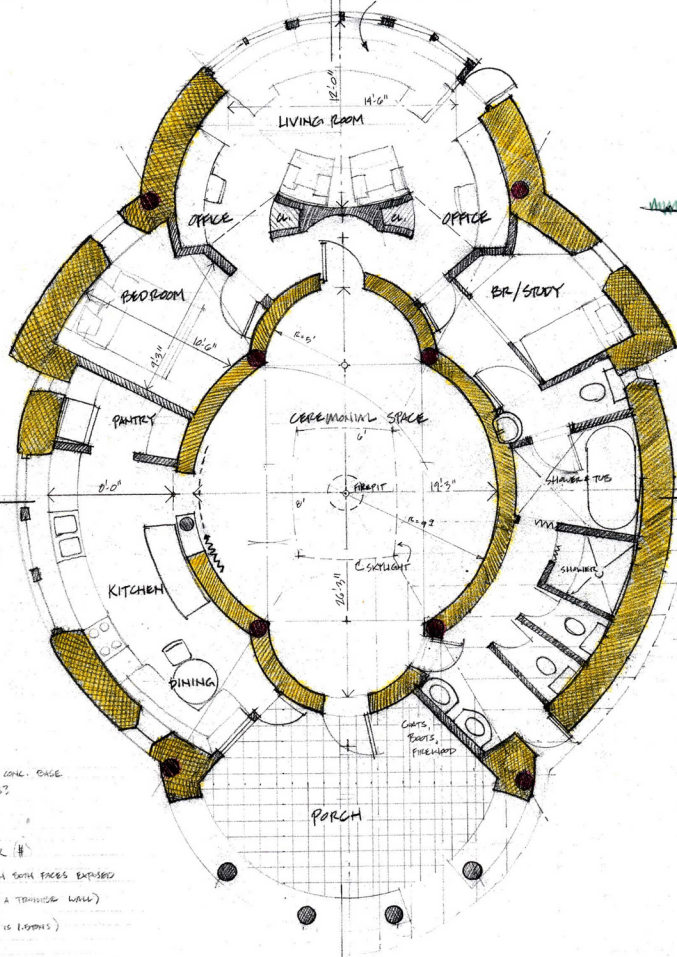


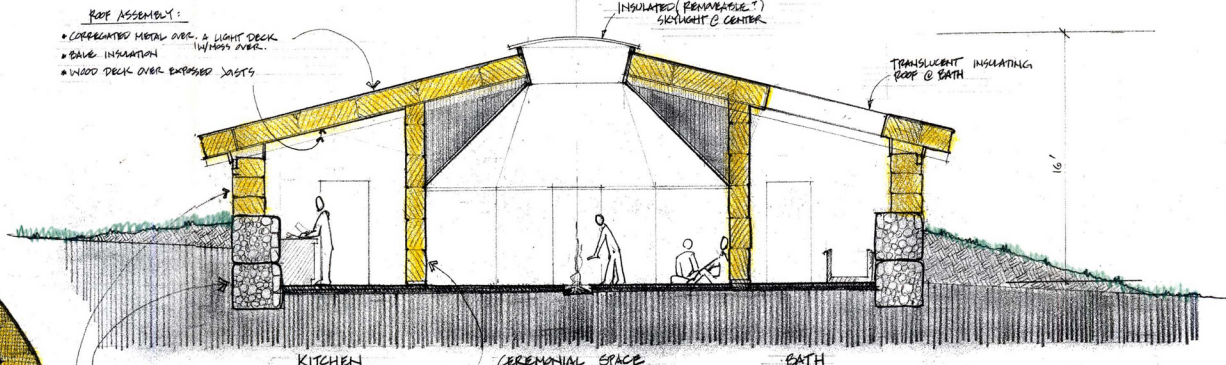
LONGITUDINAL SECTION



FLOOR PLAN
- CAPED VERSION

NET INTERIOR: 1742 sq ft
 STD WALL EQUIV: 1900 sq ft
 PORCH: 182 sq ft

- (REPEATED) PINE STRUCTURE INTO TYPE IN CONC. CASE
- DUAL EXPOS. OF SIDES WITH BUILT WALLS?
- 'SHINGLED' CORNER PLASTER EXTERIOR
- FIBER-CEMENT WINDOW SUBSTITUTES
- PLANK INTERIOR LINING → HAND PAINTER
- INSULATION EXPOSED: VGL. COLUMNS WITH BOTH FACES EXPOSED
- CLAYED CERAMIC FACES ON SOUTH (LIKE A THICKNESS WALL)
- SALVAGE FIBERGLASS 160/TON (3'x5'x4" IS 1.00 TONS)
- USE CHEAPER SUEDE IN CUSHION INTERIOR
- CREATE KIDNEY - FOR DRIVE, ST. OPPOSES SEASON - BURN GRASS
- JASON WILSON, OF ARTS. SALVAGE LOGGERS
- (1970'S - 1940'S)

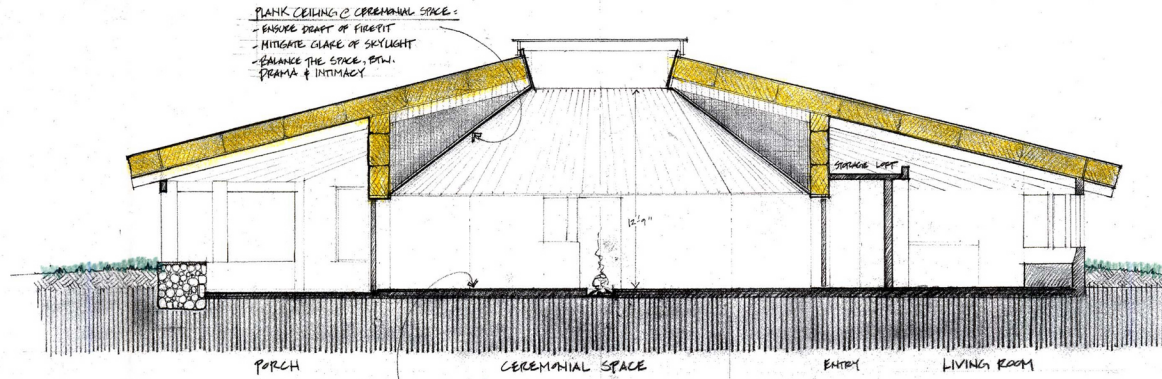


TRANSVERSE SECTION

ROOF ASSEMBLY:
 • CORRUGATED METAL OVER LIGHT DECK
 • BALE INSULATION
 • WOOD DECK OVER EXPOSED JOISTS

EXTERIOR WALLS:
 • CONCRETE BASE (STONE IN HEAVY WIRE CAGE)
 • PLASTERED BALE UPPER

NO WINDOWS SHOWN IN BATH BECAUSE A TRANSPARENT ROOF IS ASSUMED.



LONGITUDINAL SECTION

LODGEHOUSE

8 DEC 1997